



InstaShade
PARASOLS

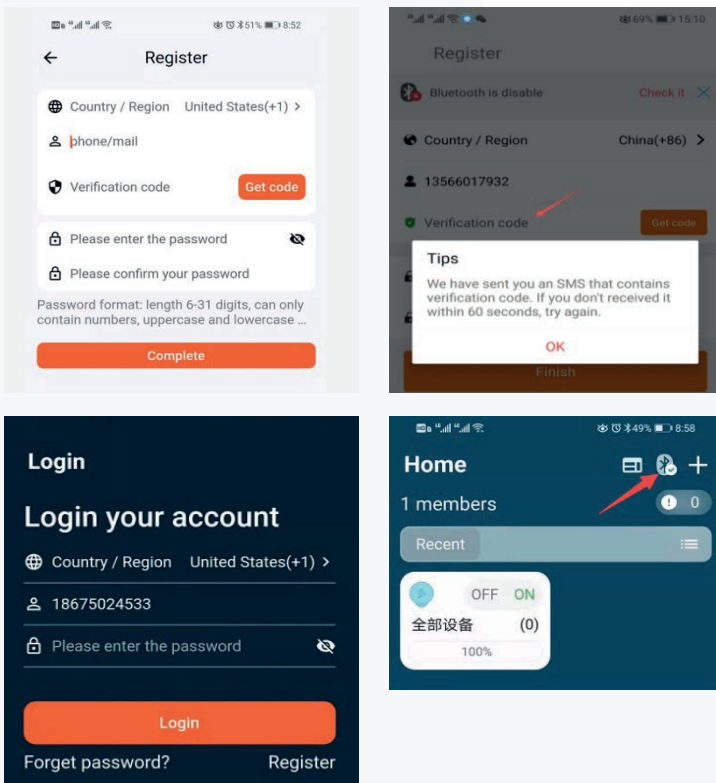
RIPPHOME OPERATING
INSTRUCTIONS

1. RippHome Download



Scan the QR code to download the APP for IOS and Android or enter <http://oeco.oecore.com/app/pages/apks/ripphome/index.html>

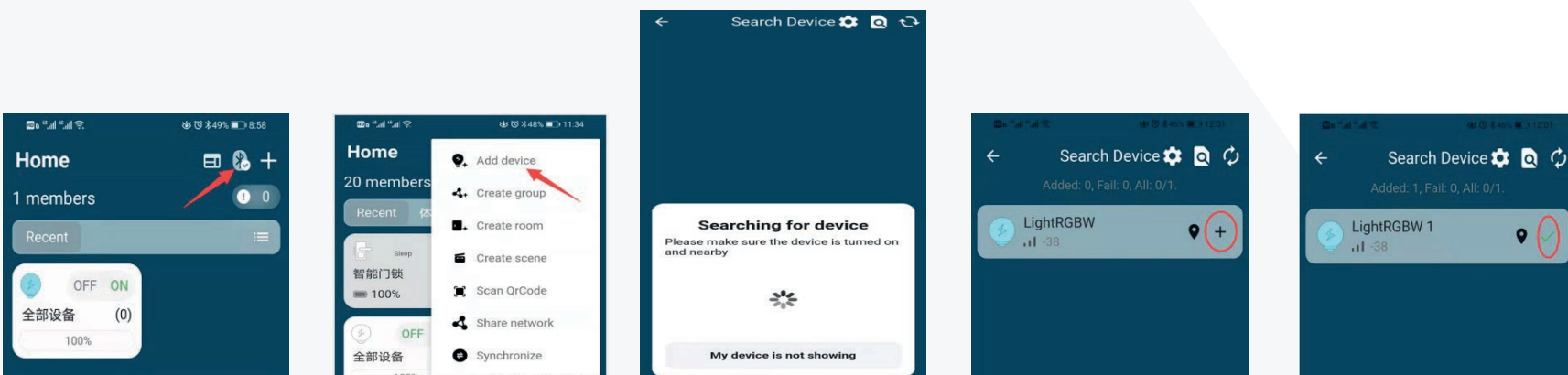
2. Register User Account



- Enter your phone number or your email, you'll receive the verification code.
- Enter the received verification code and reset your own password.
- Once registration is complete, turn on bluetooth to start pairing.

3. Pairing Smart Devices

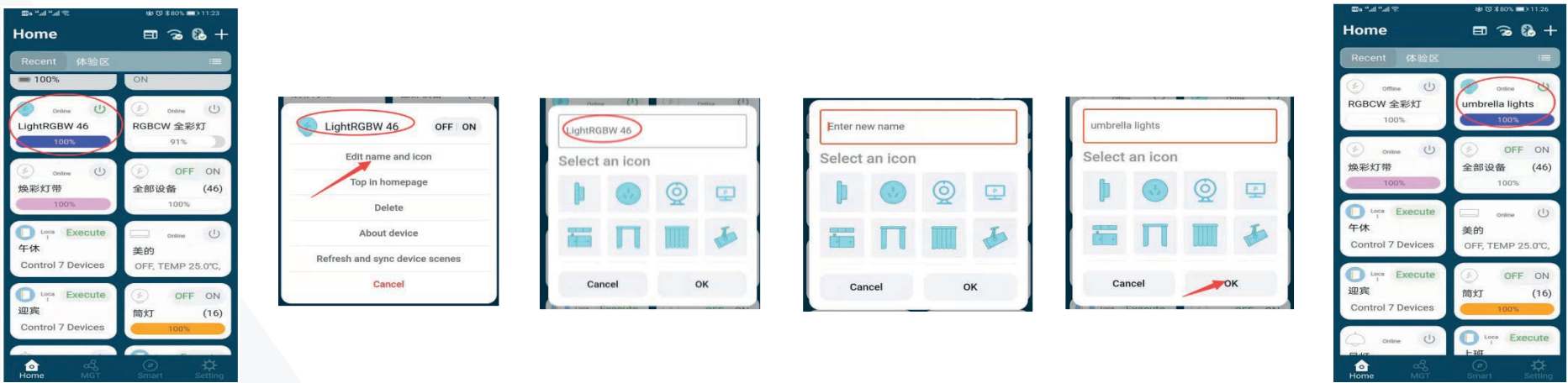
-Lighting ` smart switch ` curtains ` gateway.....



Open the APP & connect the bluetooth, after connecting to bluetooth, click + and then search for the smart devices according to the window instructions. After the search is completed, click + after the smart devices is displayed, and it becomes ✓, then binding successfully (it is recommended that no more than 10 smart devices are added each time).

**Keep all smart devices powered on before binding them*

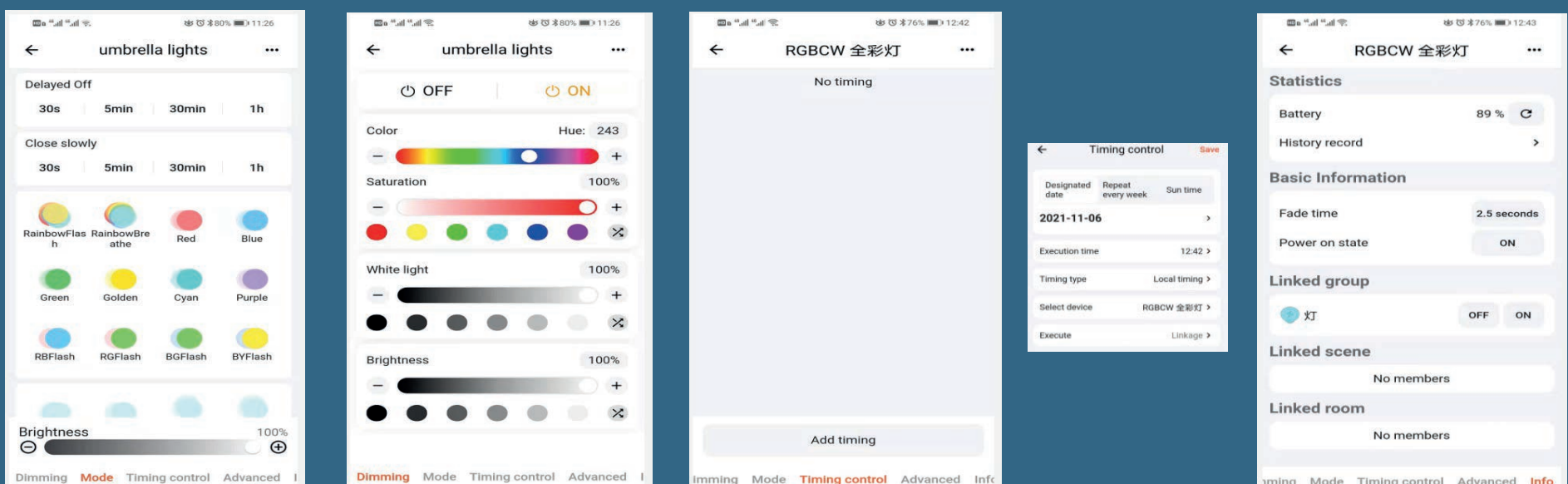
4. Change the Name of the Smart Devices



- After binding the smart devices, open the device bar, find the smart devices and click it, then the display window for changing the smart devices will appear.
- Enter the smart devices name that you want to change in the window and click **ok** to confirm. Complete the modification task.
- After binding, you can change the original name depending on the location or requirements. All smart devices (*lights, wireless intelligent switch, gateway...*).

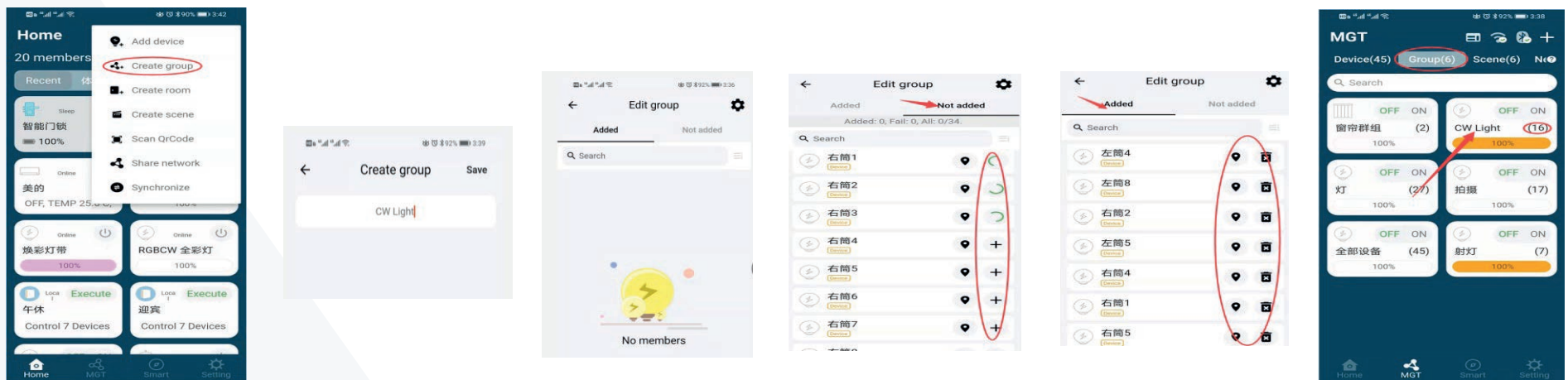
**Before binding, the lamp will flash twice after the power is switched on. After binding, the CW light will display a warm light and the RGBW light will display a blue light.*

RGBW and RGBCW Lights APP Operation Page



5. Create Group

- Suitable for multiple smart devices to achieve unified control



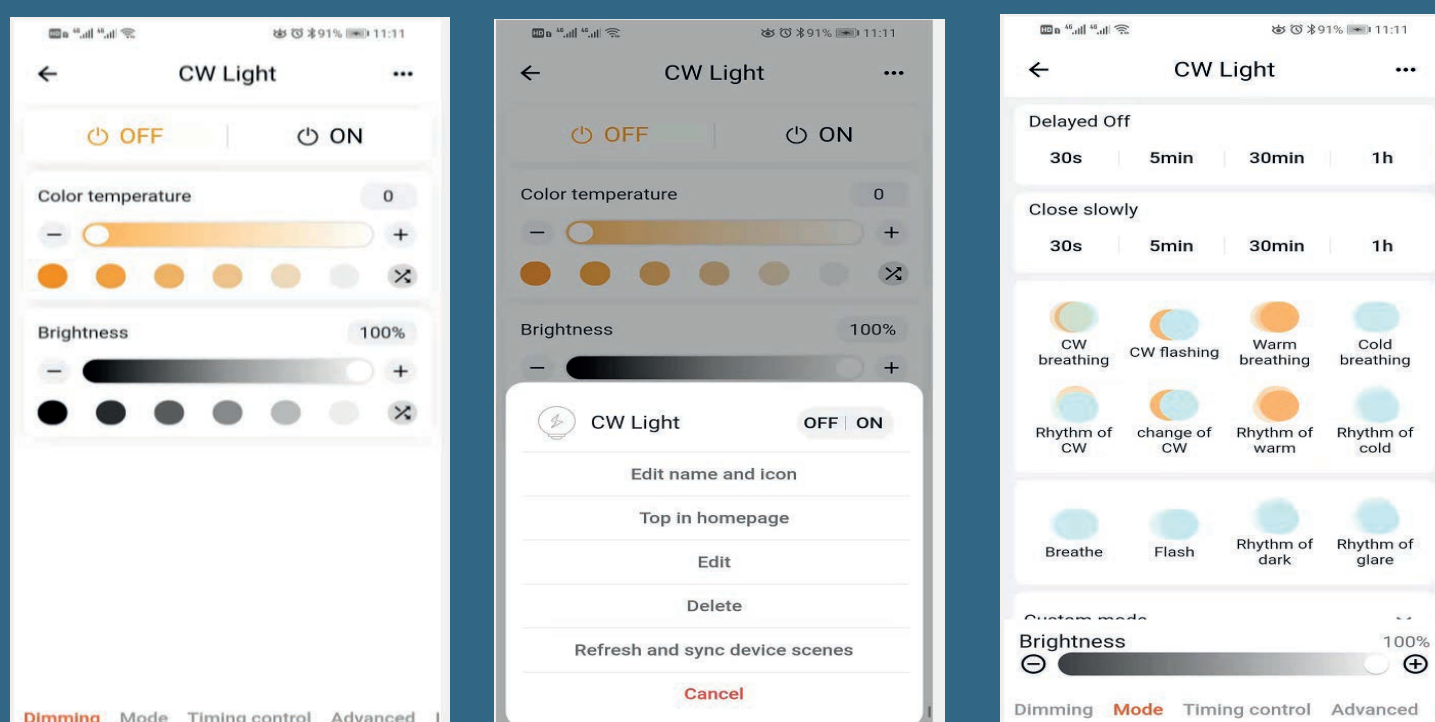
- Open the APP, after bluetooth connection, click +, display the indicator window, find the create group, after clicking display the create group window.

- In the create group display window, enter the name of the group you want to create and click save. At the same time, a new smart devices add page is displayed - [Edit Group Page](#).

- ADDED and NOT ADDED bars will appear in the Edit Group Page. Find the smart devices you need to add in the NOT ADDED bar, then click + of smart device until all the smart devices are ADDED.

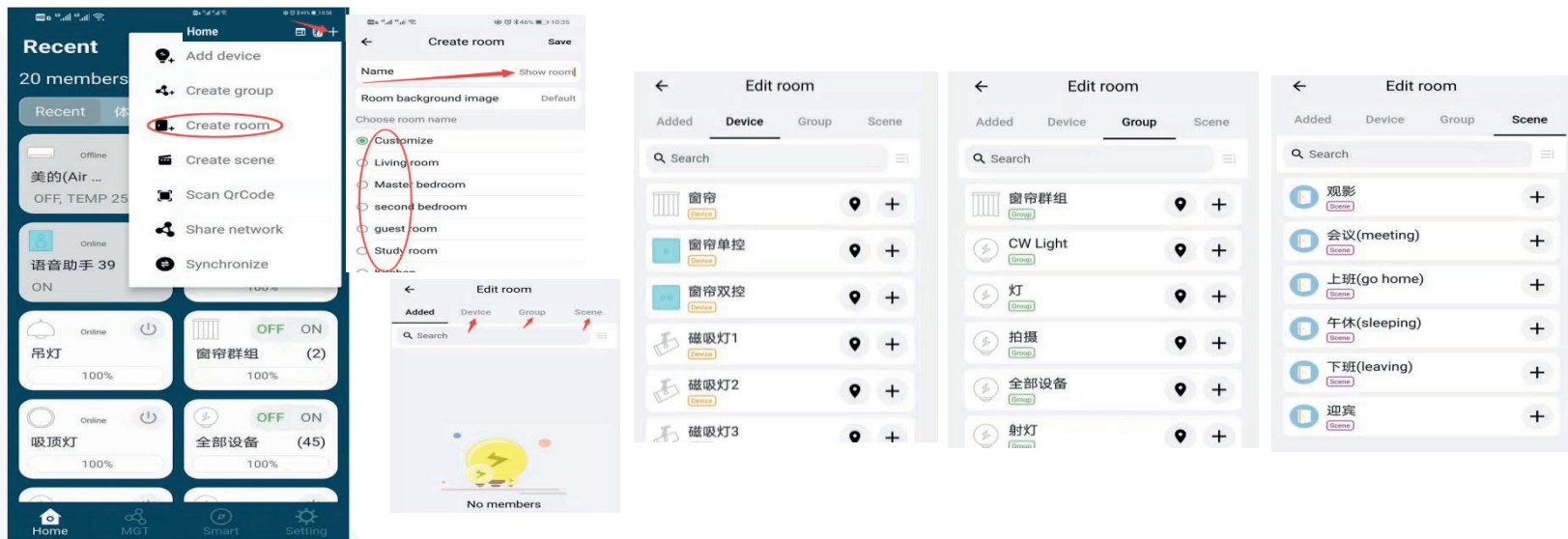
- If you need to delete a smart device in the create group, you only need to find the smart devices in the ADDED bar and click the "X" off the smart device to delete it.

Group APP Operation Page



6. Create Room

- Suitable for the control of different smart devices in the same area

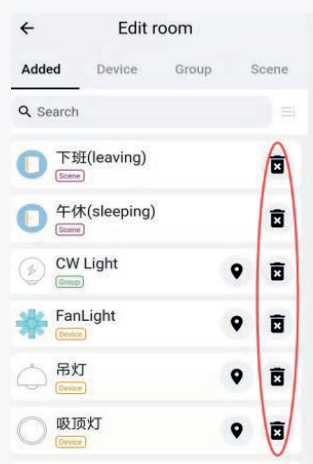
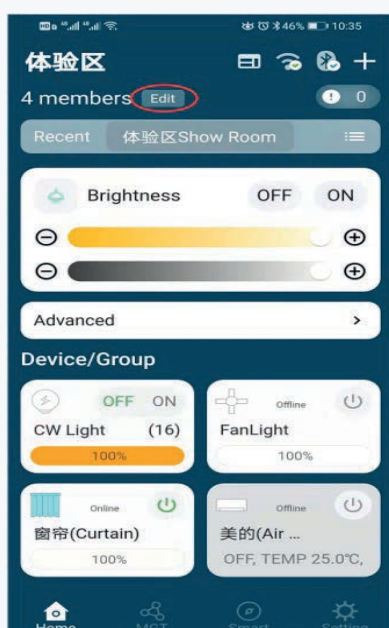
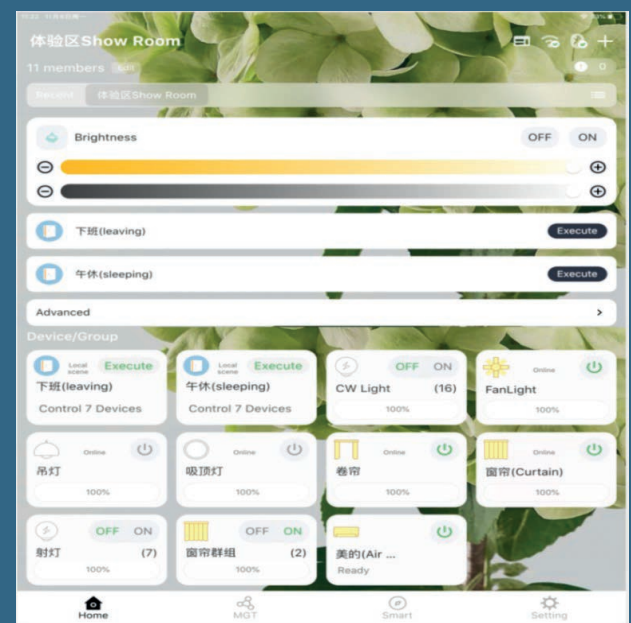


- Open the APP, after bluetooth connection, click +, display the indicator window, find the create group, after clicking display the create group window.

- In the create room display window, enter the name of the room you want to create and click save. At the same time, a new smart devices add page is displayed - [Edit Group Page](#).

- Added and Device, group, scene bars will appear in the Edit Group Page. Find the smart devices you need to add in the three bars, then click + of smart devices until all the smart devices are added.

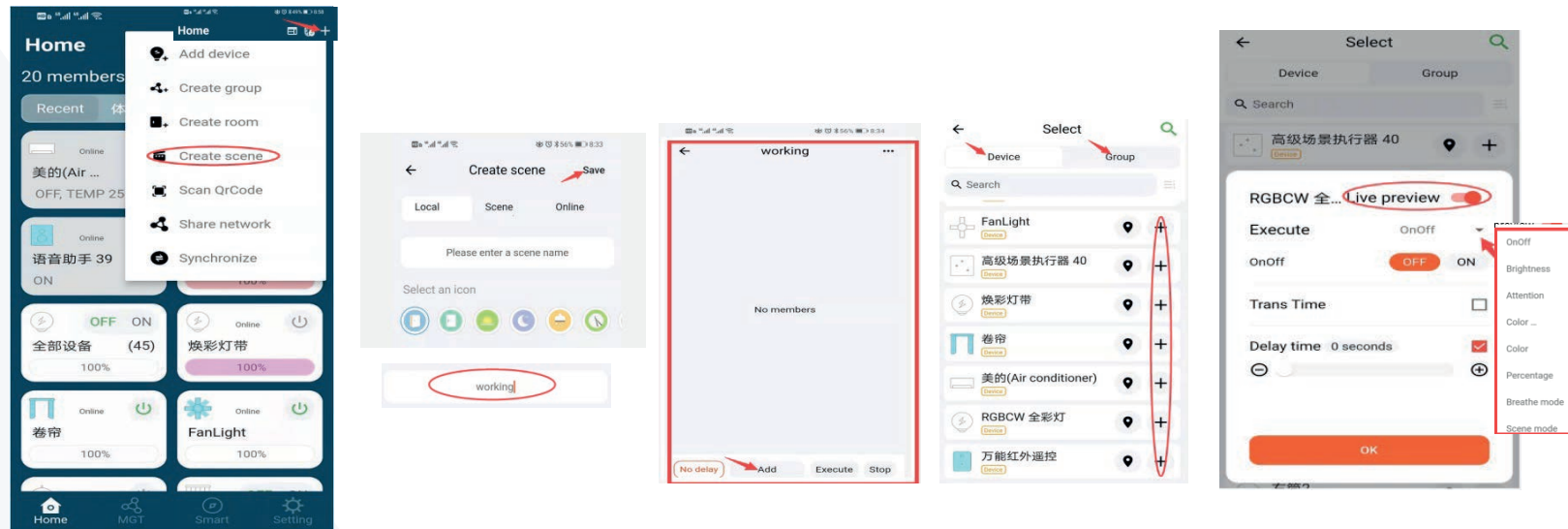
Room APP Operation Page



- If you need to remove smart devices from ROOM, click "Edit" to enter the Edit Room Page and find smart devices to be removed in the ADDED BAR. Click "X" to remove.

7. Create Scene

- One click control of smart devices in different states in the area



- Open the APP, after bluetooth connection, click +, display the indicator window, find the create scene, after clicking display the create scene window.

- In the create scene display window, enter the name of the scene you want to create and click "Save", once saved, generate a scene page and click "ADD" at the bottom of the page. At the same time, a new smart device add page is displayed - Select Page.

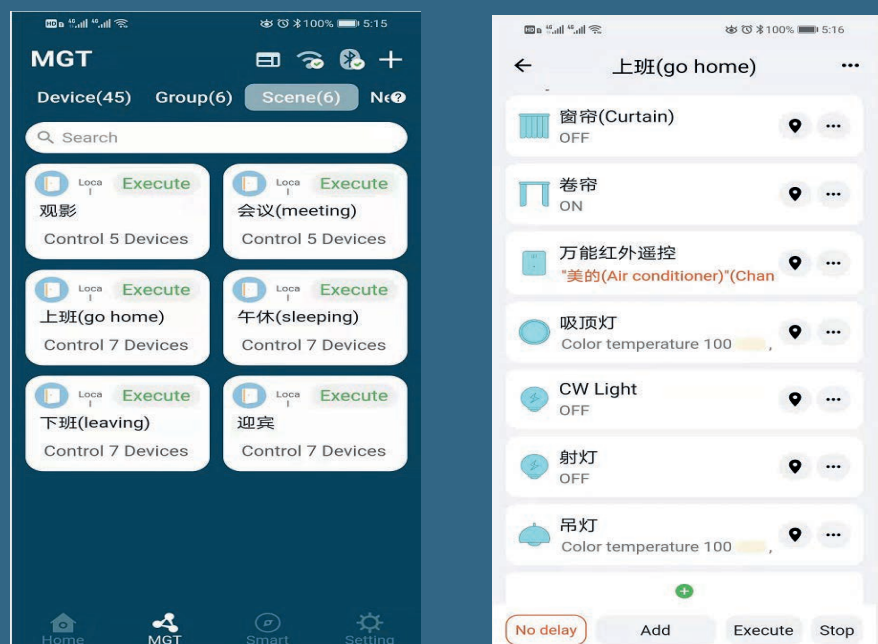
- Device and Groups will appear on the select page. Find the smart devices you want to add in these two bars, Click + for the smart devices. A new operation page is displayed.

- Open the Live Preview in the new page, and select the feature you want in the Execute. Set it and click Ok. The smart device is added.

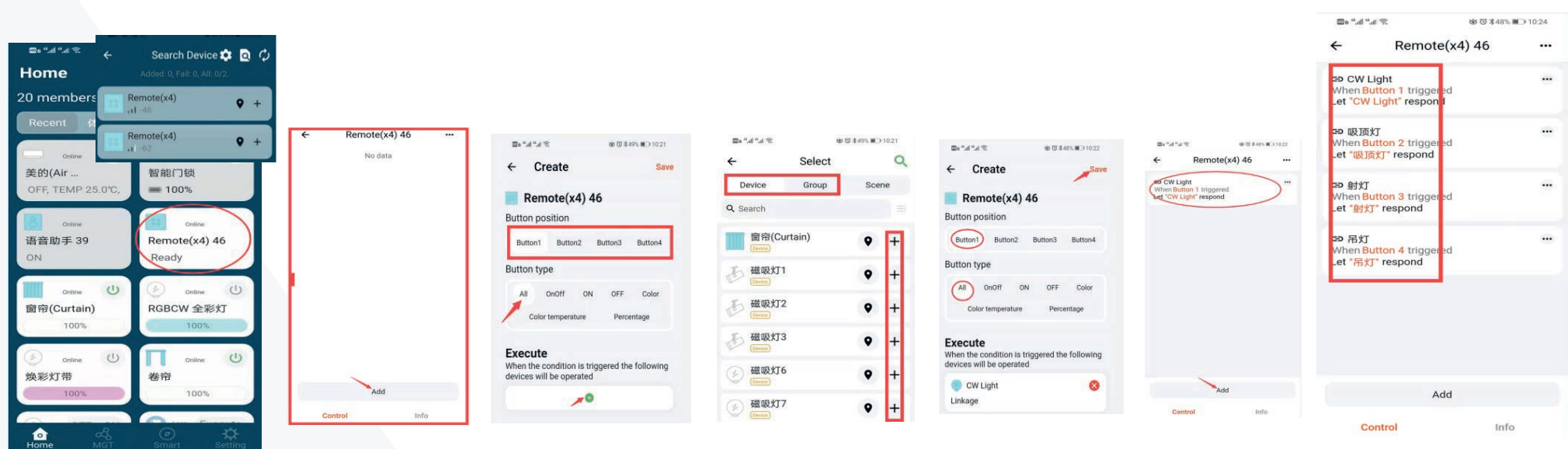
- You can continue to add smart devices in the Device and Group bars until you are done.

- After all smart devices are added, click the "Execute" on the scene page to create a new create scene.

Scene APP Operation Page

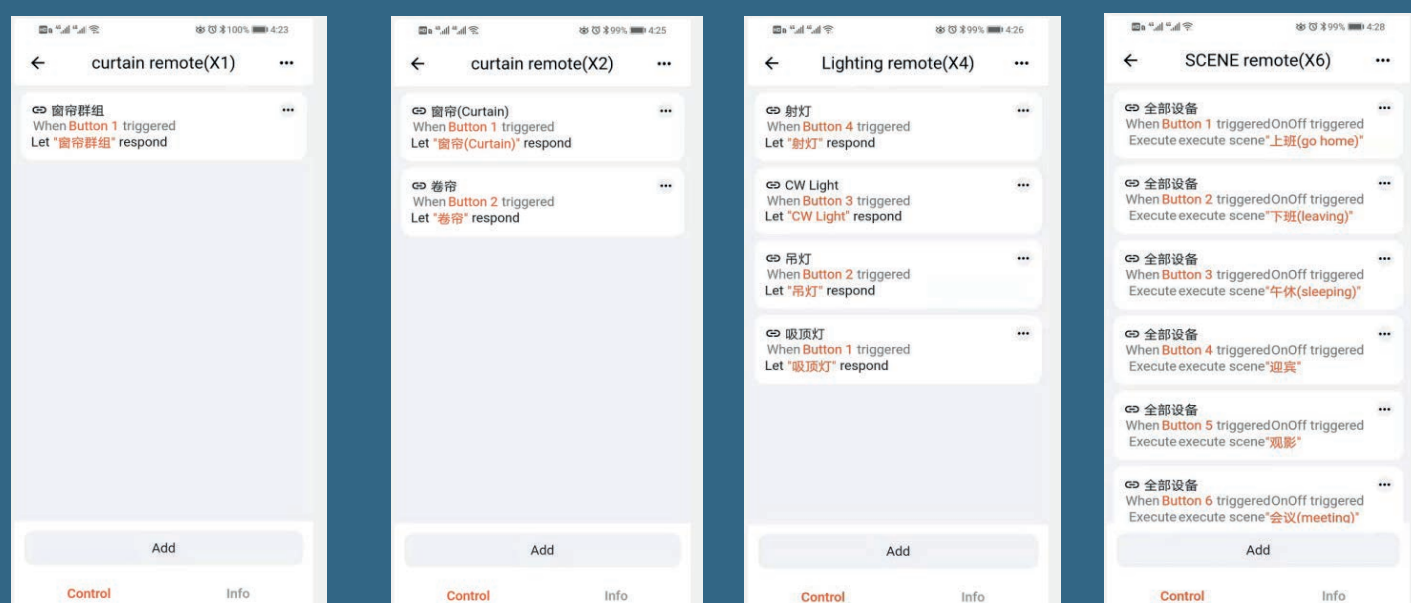


8. Pairing Remote to LED Lights

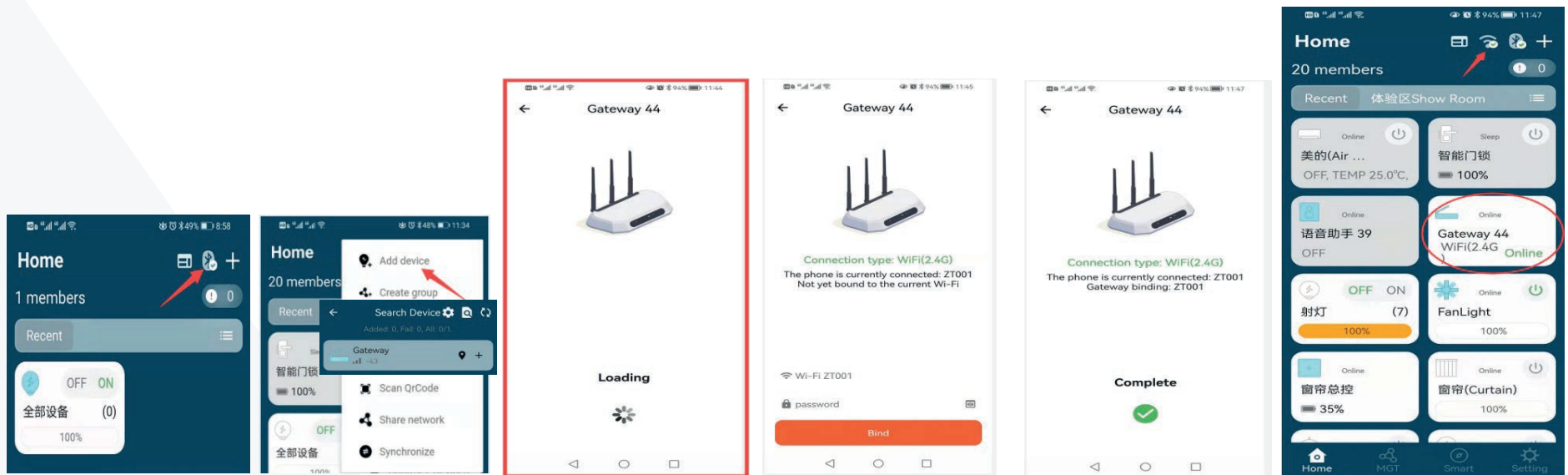


- Lighting products have two kinds of smart switches: Remote (X1) and Remote (X4)
- After APP is bound smart switch, Find the remote (X4) in the Home bars and start binding smart lighting products.
- On the Create Page select Button 1 (Button2...) and All, click + to enter the select page.
- On the Select Page, you can select the smart devices you want to bind to from the DEVICE and GROUP bars.
- Select the smart device to bind, click Save Button 1 to complete the binding, continue the binding of Button 2 until all Button binding is completed. Remote (X4) is now available.
- When the smart switch is powered on, the indicator light (blue) blinks before APP binding and no longer blinks after APP binding.
- The smart switch must be in the energized state when binding the devices.
- Curtain has two kinds of smart switch: Remote (X1) and Remote (X2)
- Scene have one smart switch Remote (X6)

Smart Switch APP Operation Page

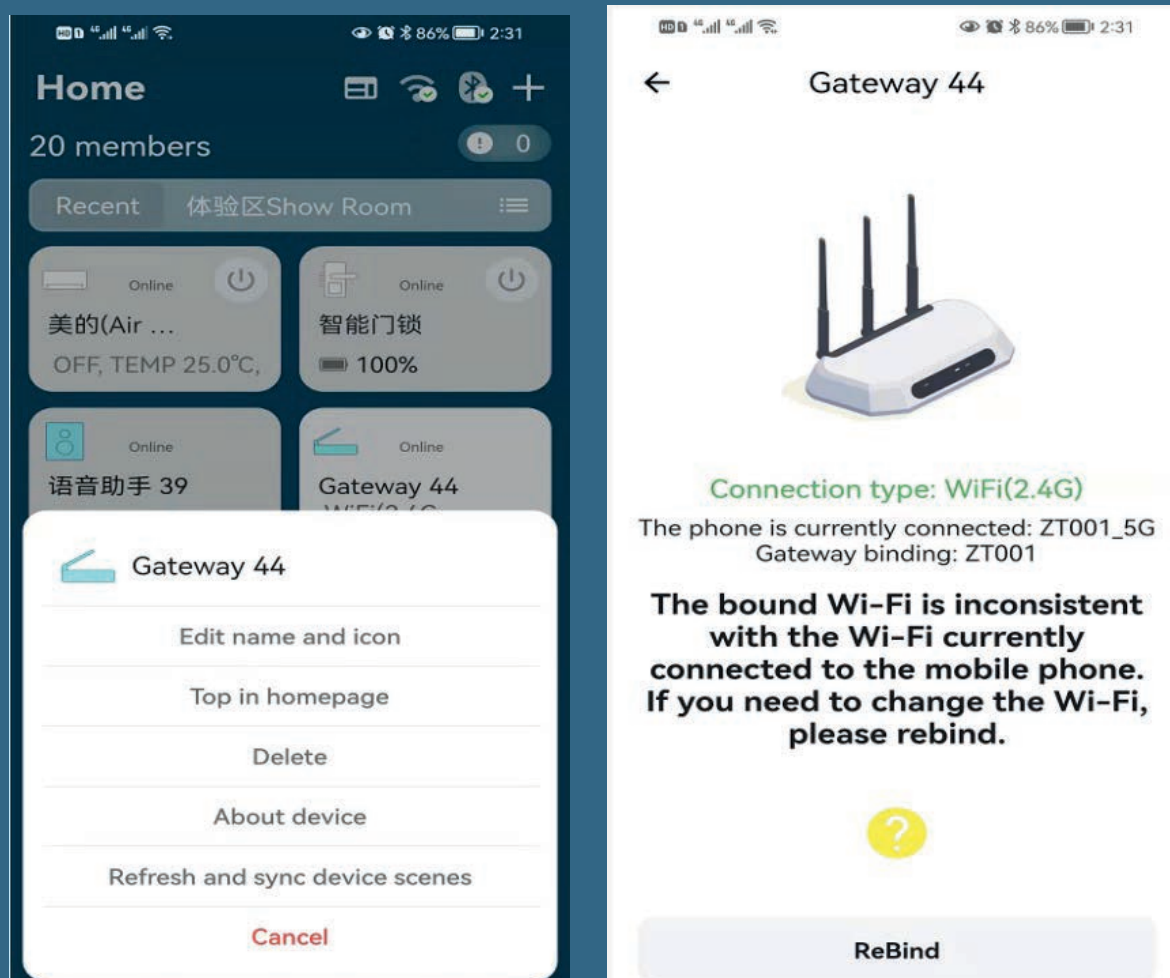


9. Binding Smart Gateway



- Before the gateway is added, the APP only display bluetooth connection, which cannot be controlled remotely.
- After gateway is added successfully, find GATEWAT in the device bar and click it to connect to WIFI. *(For details about how to add a gateway, refer to <<3. Binding Smart Devices>>)*
- After the gateway is bound to WIFI, the APP will display WIFI and bluetooth connection, at this time, the smart devices can be controlled remotely.

Gateway APP Operation Page

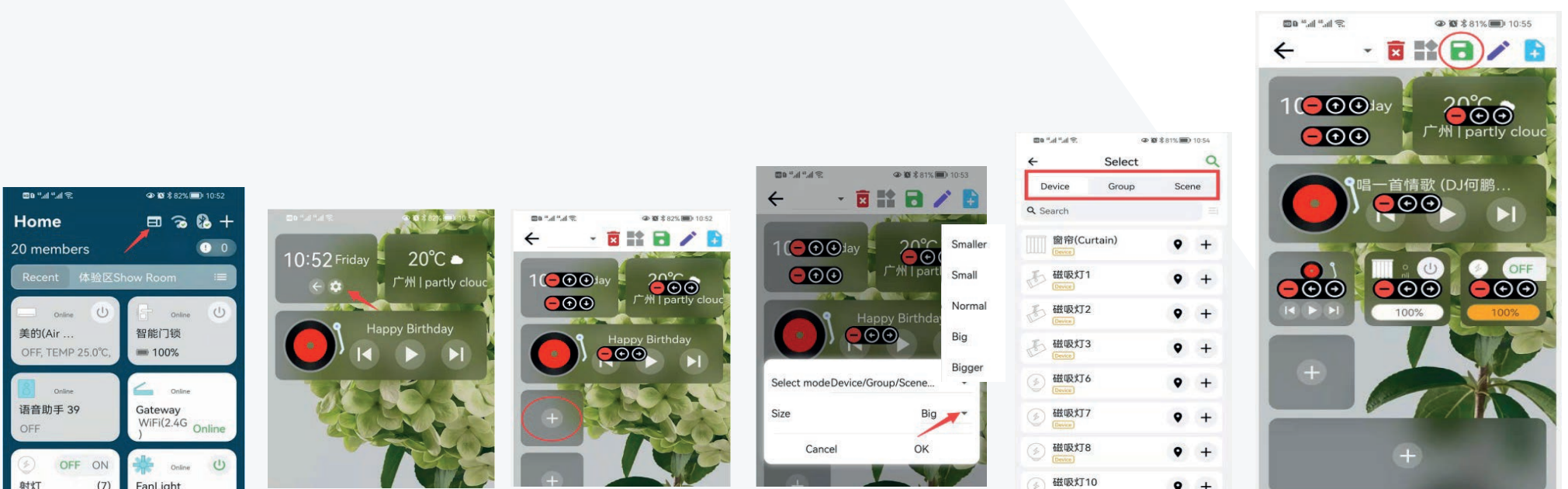


10. Create Center Panel

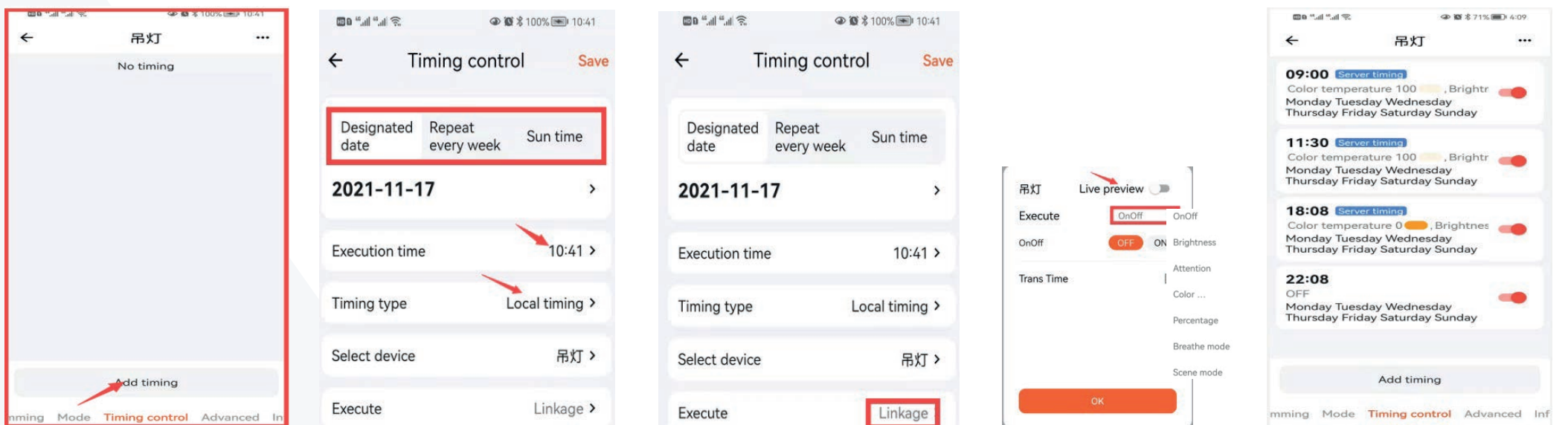
Center Panel APP Operation Page



- Click the center panel “X” on APP to open the setting page.
- Click the settings icon on the page, and go to the page for binding smart devices.
- In the binding page, click +, icon sizes selection page will appear, you can choose the size you need, click OK to confirm.
- On the select page, you can select the product from the Device, Group and Scene bars. After selecting, click the Save button “ ”. The Centre panel is set.



11. Timing Control



- Open the timing control of the smart devices, click the “Add timing”, the timing control page is displayed.
- Select timing date, time and timing type from timing control page, when you're done, click “Linkage”, a new page is displayed.
- Open the Live Preview in the new page and select the feature you want in the Execute. Set it and click Ok. Then click “Save” to complete the setting.

Through the timing setting, lights, air conditioning and other smart devices can achieve a variety of functional modes

Example

Lights

AM 9:00 Colour Temperature: Warm White / Brightness 100%
PM 12:00 Colour Temperature: Cool White / Brightness 60%
PM 18:00 Colour Temperature: Cool White / Brightness 30%
PM 22:00 OFF

FanLight

AM 7:00 Colour Temperature: Warm White / Brightness 100%
AM 7:00 Colour Temperature: Warm White / Brightness 100%
AM 12:00 OFF
AM 12:00 Level 3/6
PM 18:00 Colour Temperature: Cool White / Brightness 100%
PM 18:00 Level 5/6
PM 22:00 OFF
PM 22:00 OFF

12. Trouble Shooting

If you cannot find the device on the app, and it is turned on it will need resetting. To do this, turn the device off and on 6 times at mains power. Once reset the LED lights will filter through all the colours and then turn white. You should now be able to find the device on the App.