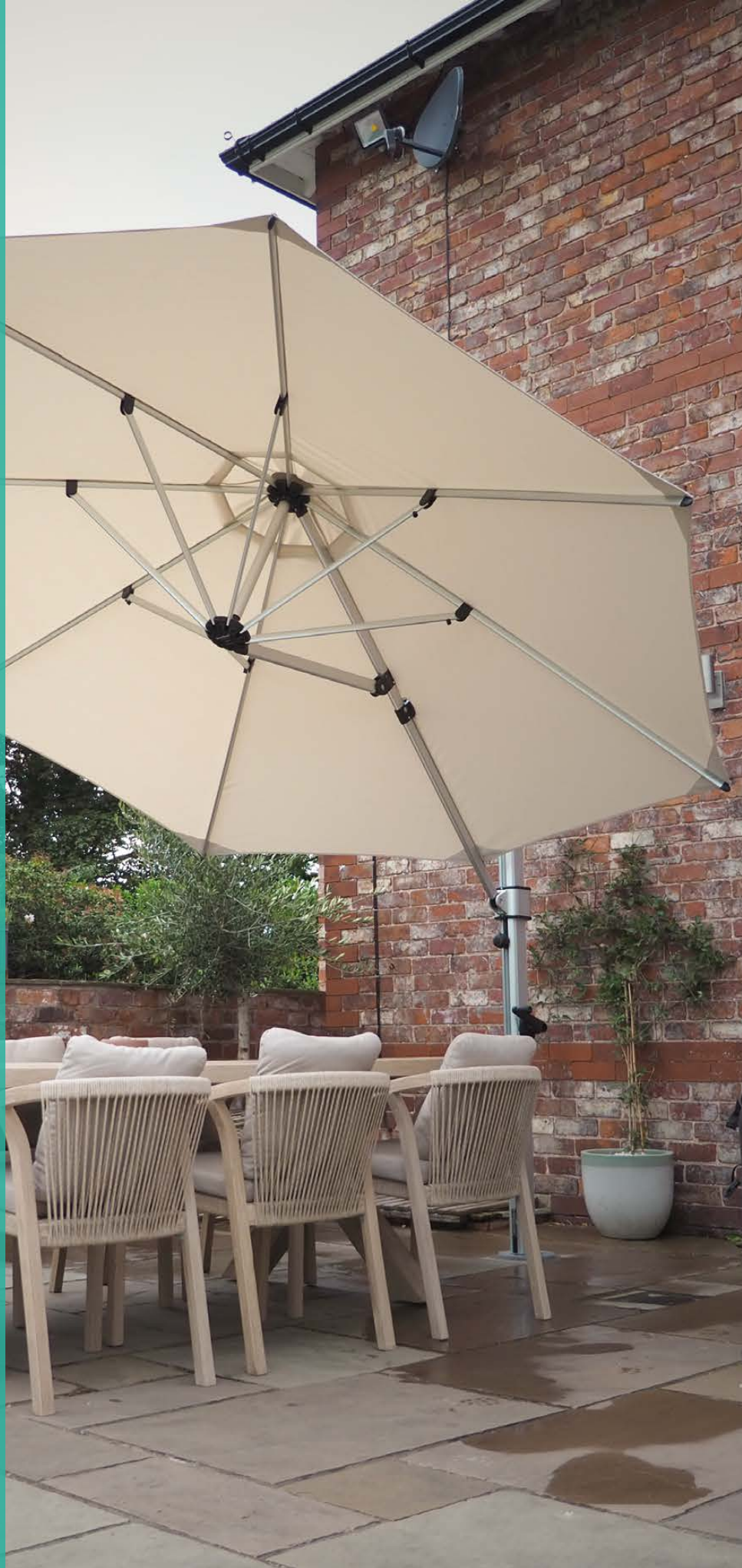


Aurora

Cantilever Umbrella

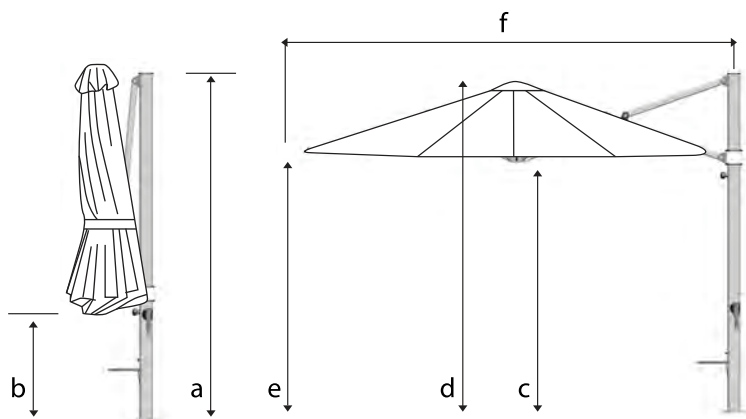
An elegant & compact cantilever umbrella designed for ease of use

- Full 360° rotation to maximise shade coverage
- UNLIMITED tilt positions to perfectly block out low afternoon sun
- Very easy to use
- Folds neatly against the mast
- Lightweight construction - can be removed by one person
- Easy installation options or **MOVEABLE BASE OPTION**



50 km /h
Wind Rating

The Aurora



Lightweight and easy to use cantilever umbrella with a 360° rotation feature.



Black Smoked Tweed Slate Natural Pistachio

Dimensions

*all measurements are rounded and are subject to change.



3.5m oct



2.8m sq



2.5m sq

Dimensions of closed umbrella

a: Mast height (cm)	282	282	280
b: Distance from arms to ground (cm)	100	76	96
Weight of umbrella when folded (kg)	27	27	26

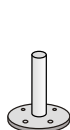
Dimensions of open umbrella

c: Height to canopy hub (cm)	200	210	198
d: Total height to top of canopy (cm)	264	274	254
e: Height to edge of canopy (cm)	210	215	189
f: Distance from outside edge of mast to outside edge of canopy (cm)	360	310	280
Width of canopy (cm)	350	280	275

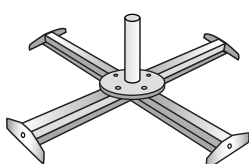
Packaging dimensions

Dimensions of cardboard packaging (cm)	27x47x290	27x47x290	27x47x290
Weight of umbrella when packaged in carton with spigot (kg)	39	39	39

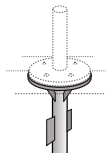
Base and Installation Options



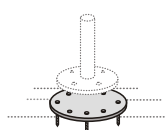
Spigot Included



Cross Base



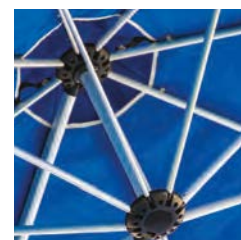
In Ground Fitting - to be concreted into ground



Base Plate 315mm ϕ - to bolt to concrete patio or wooden deck



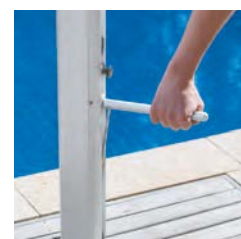
Easy tilt adjustment



Marine grade aluminium struts



Easy winding handle



Easy rotational locking handle