



# InstaShade

PARASOLS

[www.instashade.co.uk](http://www.instashade.co.uk)





# About Us

Luxury umbrellas  
for your home  
and business...

Tel: 01925 859 960  
Email: [info@instashade.co.uk](mailto:info@instashade.co.uk)  
Web: [www.instashade.co.uk](http://www.instashade.co.uk)

Transform your exterior with smart, elegant outdoor solutions from Instashade. We're passionate about the parasols we provide, and offer a superb range of umbrellas that fuse style and functionality.

As a family-run business with over 15 years in the industry, our expertise and strong client relationships make us a trusted choice for your outdoor needs, whether you're a large corporate organisation or a homeowner with an eye for exterior design.

We pride ourselves on excellent customer service, and supply only the finest, most innovative parasols on the market. All of our products include a minimum two-year warranty, to give you confidence in the quality of our umbrellas.

Should you require assistance choosing your parasol, we would be more than happy to help.





# For your home

Experience the bliss of outdoor living, all year round...

Enhance your exterior design with a luxury parasol that's both sturdy and stylish. Made from premium materials, these attractive parasols make an impressive canopy over your lawn, terrace or patio.

With a strong, flexible design that effortlessly shelters you from the elements all day long, our umbrellas are designed to complement, not compromise, your exterior. From summer evenings entertaining friends to long afternoons in the garden, these parasols make the ideal companion for your al-fresco lifestyle.

Easy to assemble, move and store, our parasols are a versatile and practical choice for your outdoor space, with contemporary styling that gives them a touch of elegance.

Browse our collection to find the perfect size, colour and style for your home.





# For your business

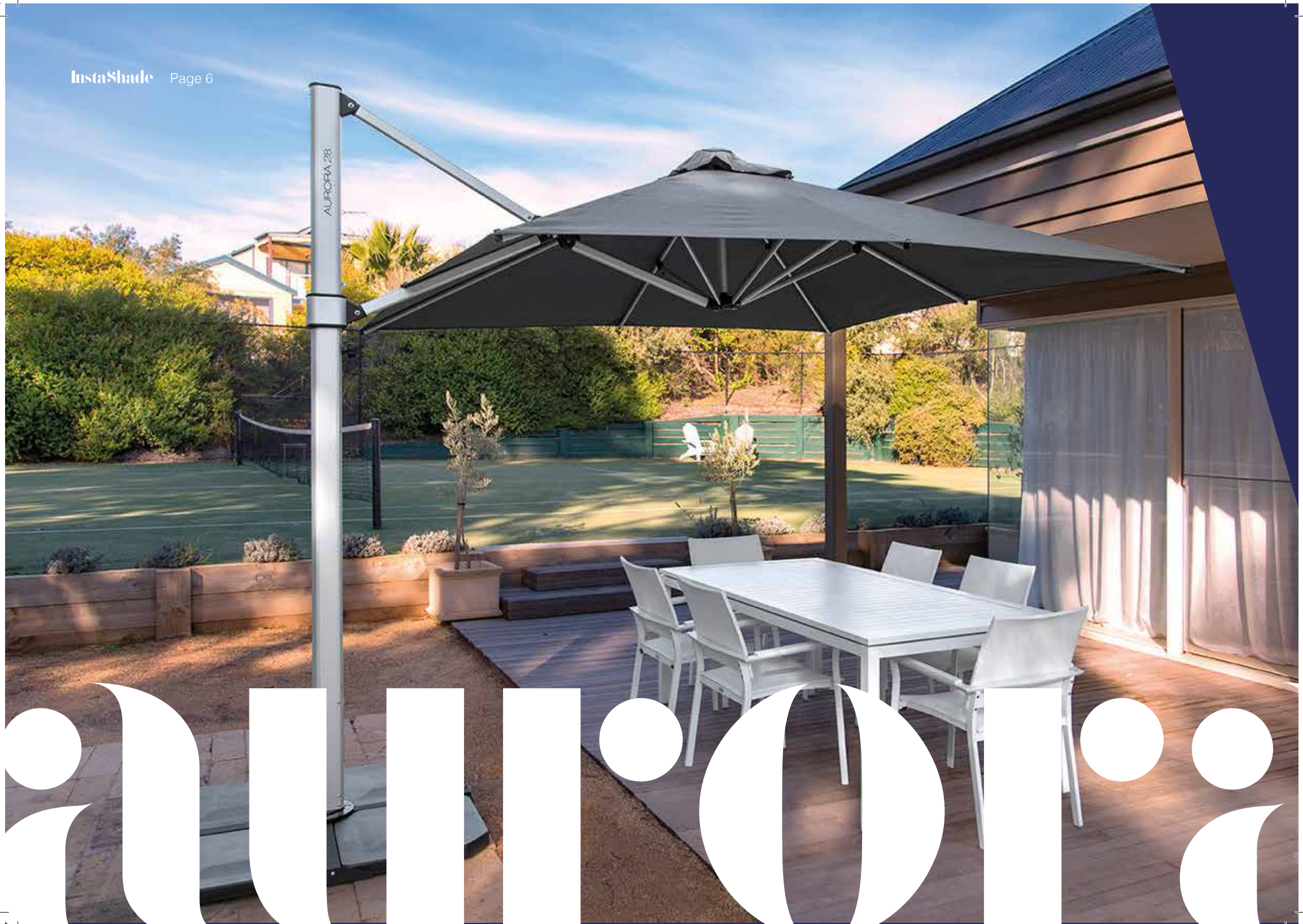
Create a space where customers can mingle and relax...

Optimise the use of available space in your premises, by creating a terrace or patio that customers can enjoy, whatever the weather. Our commercial-grade umbrellas are a sleek and stylish addition to your exterior, ideal for bars, restaurants, cafes and hotels.

From lightweight parasols to heavy-duty umbrellas, our premium collection offers something for every premises. Easily adjust the height, tilt and positioning, to protect your customers from the elements all day, every day.

With all-weather canopies and sturdy frames, our umbrellas are a superb investment for your business. Choose a size, colour and design that slots in with your exterior; branded umbrellas are available across our collection.





# Aurora

## Luxury Cantilever Umbrella

Available sizes:

2.5m Square

2.8m Square

3.5m Octagonal

An elegant, lightweight and compact umbrella, designed for ease of use.

- Maximise shade coverage with flexible 360° rotation
- Block out low afternoon sun with unlimited tilt positions
- Space-saving design with no central post
- Built for longevity, using marine-grade materials
- Easy to install and disassemble, with an optional movable base
- Folds neatly against the mast for compact storage
- Water-repellent and UV-resistant canopy

Our stunning Aurora parasol is a simple and compact solution for your home or business, with a strong olefin canvas available in a range of stylish colours.

Frame Finish:

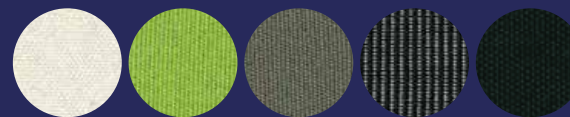


Aluminium  
Finish

Wood  
Finish

Available in 5 standard colours:

(huge range of non-standard colours available)



Natural

Pistachio

Slate

Smoked Tweed

Black

# Accessories





### 1. Cover Bag

Our high quality protective cover can be placed over your parasol when not in use. The heavy duty canvas cover has an aluminium pole attached to make it simple and easy to fit over any of our parasols.

### 2. Cross Base With Concrete Blocks

Our movable cross base with concrete pavers means the Aurora Umbrella can be positioned and removed easily.

### 3. Stabilizing Bars

Our stabilizing bars can be added to assist performance in a wider range of wind conditions.

### 4. LED Lighting

Our rechargeable LED strip lights requires no power, and once fully charged lasts up to 8 hours on full power and up to 16 hours on half power!

### 5. Base Plate

Our base plate can be bolted directly to concrete or decking, meaning you can fully remove the umbrella and spigot when not in use. 315mm Diameter.

### 6. In-ground Fitting

Our in-ground fitting can be permanently installed on soil or your patio. Installation is a simple DIY job, alternatively our expert installation team can help.

### 7. Stainless Steel Spigot

Our stainless steel spigot is perfect for harsh environments or for customers who prefer the look of stainless steel.

### 8. Barrel Extension

The barrel extension is used when extra height is needed. This extends the height of the parasol by 20cm.

### 9. Galvanised Stack

Our galvanised stack is an attractive non-permanent option. A double 40G and 36G stack is needed. Plates bolt together, and the spigot mounts to the top plate. 150kg.







# Eclipse

## Premium Cantilever Umbrella

Available sizes:

3m Square

3.5m Square

4m Octagonal

4m x 3m Rectangular

A high-performance parasol to shelter your outdoor space, whatever the weather.

- Maximise shade coverage with full 360° rotation
- Shelter from low afternoon sun with two tilt positions
- Space-saving design; no central post and no unsightly base
- A commercial-grade umbrella, made from marine-grade materials
- Stores away neatly into a compact, vertical format
- Easy installation and optional stabiliser bars for breezy days
- Water-repellent and UV-resistant canopy

Our strong, stylish Eclipse parasol is a heavy-duty umbrella for your home or premises, with a durable acrylic canvas in a superb selection of colours.

Frame Finish:



Aluminium  
Finish

Wood  
Finish

Available in 5 standard colours:

(huge range of non-standard colours available)



Natural

Pistachio

Slate

Smoked Tweed

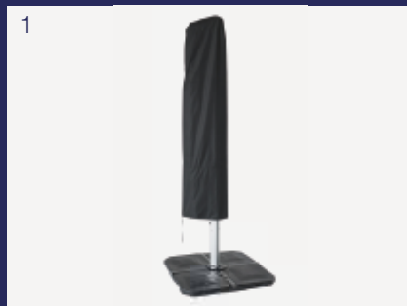
Black





cinis

# Accessories





### 1. Cover Bag

Our high quality protective cover can be placed over your parasol when not in use. The heavy duty canvas cover has an aluminium pole attached to make it simple and easy to fit over any of our parasols.

### 2. Cross Base With Concrete Blocks

Our movable cross base with concrete pavers means the Aurora Umbrella can be positioned and removed easily.

### 3. Stabilizing Bars

Our stabilizing bars can be added to assist performance in a wider range of wind conditions.

### 4. LED Lighting

Our rechargeable LED strip lights requires no power, and once fully charged lasts up to 8 hours on full power and up to 16 hours on half power!

### 5. Base Plate

Our base plate can be bolted directly to concrete or decking, meaning you can fully remove the umbrella and spigot when not in use. 315mm Diameter.

### 6. In-ground Fitting

Using our In-ground fitting parasols can be permanently installed on soil or your patio. Installation is a simple DIY job, or we can help.

### 7. Stainless Steel Spigot

Our stainless steel spigot is perfect for harsh environments or for customers who prefer the look of stainless steel.

### 8. Barrel Extension

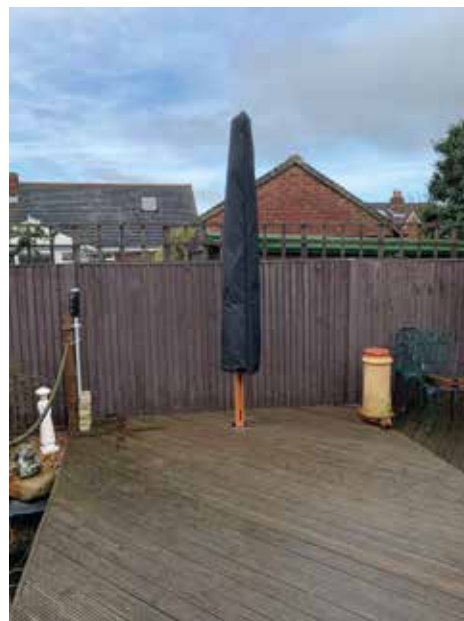
The barrel extension is used when extra height is needed. This extends the height of the parasol by 20cm.

### 9. Galvanised Stack

Our galvanised stack is an attractive non-permanent option. A double 40G and 36G stack is needed. Plates bolt together, and the spigot mounts to the top plate. 150kg.











# cafe series

# Cafe Series

## Modern Market Umbrella

Available sizes:

2m x 2m

2.8m Octagonal

3m x 3m

4.2m Octagonal

A premium parasol built to endure the elements all year round.

- The finest, most lightweight aluminium frame on the market
- Effortlessly open and close with the rope and pulley system
- Easy to install, with a movable base or in-ground fitting
- Stores neatly away in a compact, vertical format
- Various sizes and colours available for your home or business
- Strong, wind-resistant design
- Water-repellent and UV-resistant canopy

Our stylish Café Series parasol is perfect for cafes, bars and restaurants, as well as residential use, with a durable olefin canvas in several contemporary colours.

Frame Finish:



Aluminium  
Finish



Natural



Slate



Smoked Tweed



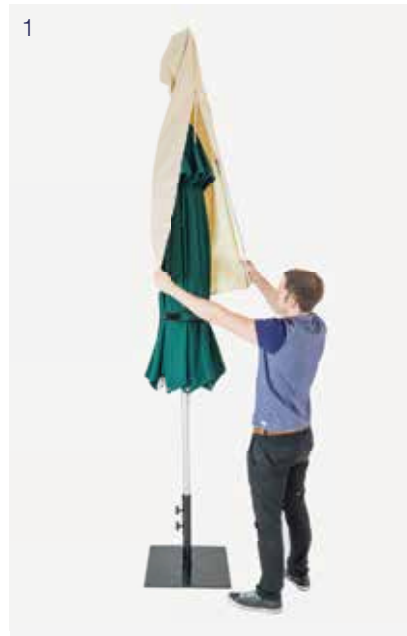
Black

Available in 5 standard colours:

(huge range of non-standard colours available)



# Accessories



## 1. Cover Bag

Our high quality protective cover can be placed over your parasol when not in use. The heavy duty canvas cover has an aluminium pole attached to make it simple and easy to fit over any of our parasols.

## 2. In-ground Fitting

Maximise your space and minimise the hassle. Designed for customers wanting a more permanent option. Using our specially designed in-ground fitting, umbrellas can be installed permanently in grass, concrete, paving or decking. Featuring a double locking mechanism to secure the umbrella, the in-ground sleeve has a closing lid that hides it away when the umbrella is removed.

## 3. Wheeled Base

Our wheeled steel base plate is a high quality powder coated steel base complete with heavy duty castor wheels. Perfect for restaurants, cafés and bars. They have a large surface area of 600mm x 600mm, and weigh 35kg ensuring maximum stability in windy locations.

## 4. Galvanised Steel Plate

Our wheeled steel base plate is a high quality powder coated steel base complete with heavy duty castor wheels. Perfect for restaurants, cafés and bars. They have a large surface area of 600mm x 600mm, and weigh 35kg ensuring maximum stability in windy locations.

## 5. Sand Bag Weights

Where extra stability is required our sandbag weights can be added. Manufactured from high quality PVC they are designed to fit to our steel base plates. Once filled they weigh around 15kg.

## 6. LED Lighting

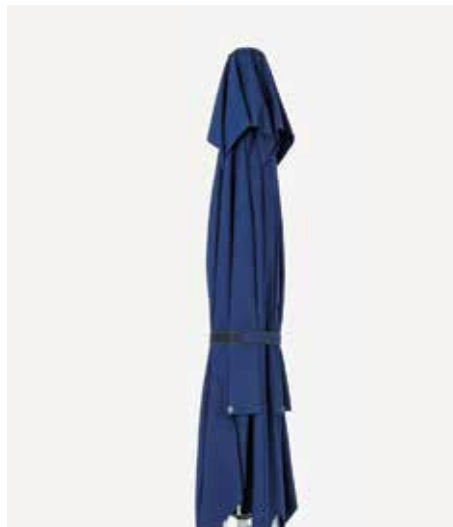
Our rechargeable LED strip lights require no power, and once fully charged last up to 8 hours on full power and up to 16 hours on half power!

## 7. Base Plate

Available in 14kg (for 2m and 2.8m) or 19kg (for 3m or 4.2m), our powder coated Steel base plate is a versatile movable base. Can be pegged or weighted as necessary.

## 8. Concrete Ring Base

36kg Concrete injected plastic base. Can be split into two halves for easy transportation. Suitable for either the 3m x 3m or 4.2m Octagonal.







# Nova

## High Performance Giant Parasol

Available sizes:

3m Square

4m Square

5m Square

5m Octagonal

3.5m x 2.3 Rectangular

4m x 3 Rectangular

A heavy-duty umbrella that offers maximum shade protection throughout the day.

- Giant canopy to maximise shelter from the elements
- Easy-to-use winding handle and telescopic mechanism
- Low maintenance and long-life design
- Strong and robust, with a wind rating of up to 80 km/h
- Made from fully corrosion resistant materials
- Available as a permanent or non-permanent installation
- Water-repellent and UV-resistant canopy

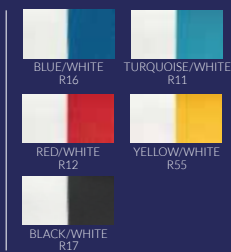
Our premium Nova parasol is a robust choice for your home or business, made from a hardwearing acrylic canvas in a range of stylish colours.

### CANOPY COLOURS Please contact us to check colour availability. (Fabric colours may vary slightly from printed swatches shown)

#### ACRYLIC COLOURS



#### STRIPE ACRYLIC COLOURS



#### PVC COLOURS

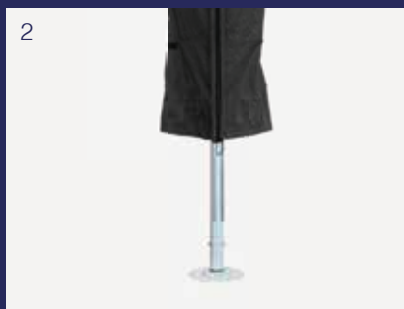








# Accessories



## 1. Cover Bag

Our high quality protective cover can be placed over your parasol when not in use. The heavy duty canvas cover has an aluminum pole attached to make it simple and easy to fit over any of our parasols.

## 2. Base Plate

Our base plate can be bolted directly to concrete or decking, meaning you can fully remove the umbrella and spigot when not in use. 400mm Diameter.

## 3. In-ground Fitting

Using our In-ground fitting parasols can be permanently installed on soil or your patio. Installation is a simple DIY job, or we can help.

## 4. Cross Base with Aluminium Cover

Our movable cross base with aluminium cover can be fitted with heavy weighted pavers (not supplied). It can be used when the umbrella cannot be permanently fitted. Due to the weight of the Nova a bolted fitting is advisable.



# Nova With Heat & Light

Our Nova commercial parasol is now available with integrated LED lights and optional heating.

- Integrated LED light kit built into Nova mast
- Operate via remote control
- Colour change function
- Low voltage
- 10m Cable included
- Bespoke heat options available





# Paraflex



Sensible and stylish, our Paraflex wall mounted umbrella is the ideal shade solution for tight spaces.

Simply attach the Paraflex wall mounted sun umbrella to a post, wall or building then use the clever simple click bracket for effortless operation and quick removal. Whether for a small balcony or outdoor patio, the Paraflex ideal to provide shade in sheltered, low wind spaces where a conventional umbrella is simply impractical. As your wall mounted Paraflex sun umbrella can be tilted and freely moved, it can easily be moved and adjusted to provide you with sun shade throughout the day.

- 270cm Hexagonal Canopy
- 4.7m<sup>2</sup> shade coverage
- 2m long arm
- 8kg in weight

# Printing & Branding



Bespoke solutions for your outdoor space...

Make your InstaShade umbrella unique, by customising your design with our parasol printing service. Our parasols can be branded with your logo, slogan or a quirky message, with printing on the roof panels or valance available.

With their anodised aluminium frames and distinctive colours, these parasols are perfect for hospitality clients, as well as events, markets, shows and exhibitions. Our umbrellas can be installed on a permanent or mobile basis, with café barriers and event flags to match.

For more information about printing and branding, get in touch with our team.

# Installation



Choose an installation option that's just right for you...

All of our luxury parasols come complete with a spigot, allowing you to connect your umbrella to the base beneath. Our removable and semi-permanent bases are chosen separately.

If you intend to keep your parasol in one place, we recommend the semi-permanent option for the following reasons:

- Maximum security and stability
- Increased wind resistance
- Umbrella can easily be removed
- Multiple installation options
- No large base

Our semi-permanent installation options include a base plate, bolted directly down to concrete or decking; and an in-ground base, designed to be concreted in. The latter is perfect for paving slabs, grass and gravel, with a flush fitting available on request.

## **Taking installation off your hands**

Installing our parasols is simple enough for anyone with DIY experience. However, should you need a little help, Instashade offer a full installation service. We cover the whole of the UK and can work with local contractors to ensure a precise fit for your parasol.



# Outdoor Heating



## A touch of warmth for your exterior...

Make your outdoor space evergreen with heating solutions that take the chill off breezy nights and cold winter days. Instashade offer attractive infrared heating units for bars, terraces and alfresco dining areas.

Designed in the UK, our eco-friendly outdoor heaters are a cost-effective addition to any residential or commercial space.

Outdoor heating, designed around you.

Whatever the size, layout and purpose of your outdoor area, Instashade will ensure that you receive the perfect solution. Our project managers can work with you to tailor our heating units around your exterior, for warmth that doesn't compromise on style.

We can even install your outdoor infrared heating, to deliver secure and long-lasting results that blend effortlessly into their surroundings.

# Heat Dome



Unique and practical, the sophisticated HeatDome light and heat outdoor entertainment system operates through standard power points. The InstaShade HeatDome uses 5 x less energy compared to a standard gas-fuelled patio heater.

- Radiating heat range of 5m
- Light with control that can be dimmed
- Base comes with two wheels (4 wheel upgrade available)
- Available in Black or White (custom RAL colours available).
- Bluetooth Music, with 2 x 80 Watt waterproof speakers available
- Control with two positions for heating, 1500 or 3100 Watt.
- Consumption – 2.97kw/h
- Infrared Heat – 2850 Watt
- Lighting – 120 Watt

# Café Barriers



Our premium café barriers are a high quality addition to our range and can work perfectly with our parasols

Available in either 1.5m or 1.8m sizes and a chrome or black finish they are perfect for outdoor café and restaurant seating areas.

They are also extremely popular for exhibitions and events and offer a practical, eye catching and good value method of showing off your brand.

Our Café Barriers are fully modular and can be linked together.

- Fully printed banners, single or double sided available.
- Choice of banner material, including PVC, PVC Mesh, Acrylic, or polyester
- No tools required
- 12.5kg base for outdoor or indoor use
- Available in Chrome or Black finish
- 1.5m and 1.8m sizes available



# Café Screens



Create a dedicated outdoor space for your café, bar or restaurant with premium café screens. Our branded barriers are a quality addition to your exterior, the perfect complement to our luxury parasols.

Easy to move and link together, these fully modular barriers make a great choice for exhibitions, markets and events. With no tools required, you can set up an exclusive space for customers in minutes.

- Screen or full digital print available
- PVC, acrylic or polyester banners available
- Fully modular
- Available in 1m and 2m sizes
- Quantity discounts available
- Double feet available for joining barriers together

Instashade can plan your area, advising you on the best sizes to suit your needs. All barriers come as standard with single feet. If joining together please select double feet. We will contact you regarding the quantity.















Unit 7 & 8 Tatton Court  
Kingsland Grange  
Warrington  
WA1 4RR

Tel: 01925 859 960  
Email: [info@instashade.co.uk](mailto:info@instashade.co.uk)  
Web: [www.instashade.co.uk](http://www.instashade.co.uk)